



TO: NMJC Board Members and Dr. Steve McCleery  
FROM: Dr. Larry Sanderson, Director of Institutional Effectiveness  
DATE: March 1, 2013

# NMJC

## State of the College Report

### January 2013

This report is the third in an annual series of reports presenting general information and data concerning NMJC's progress towards achieving the goals set forth in the 2010-2016 Strategic Plan. The format of this report as well as the data presented within will evolve over the coming years as the institution gathers more data related to plan objectives and organizational performance. Additional reports related to institutional performance and assessment of student learning can be found on the college website at:

<http://www.nmjc.edu/facultyandstaff/assessmentofstudentlearning.aspx>

and

<http://www.nmjc.edu/administration/institutionaleffectiveness.aspx>

**IPEDS: Pages 3-4**

NMJC reports annually into the U.S. Department of Education’s National Center for Educational Statistics (NCES) Integrated Post-Secondary Data System (IPEDS) which is a system of survey components that collects institutional-level data. These data are used for policy analysis and development at the federal and state levels, for benchmarking and peer analysis at the institutional level, and by students and parents to aid in the college search process. The NCES Annual feedback Reports from which the numbers in this document are gleaned provide context for examining the data we submit to IPEDS, the NCES methodology, and comparison numbers for an IPEDS-generated peer cohort.

**Student Credit Hours: Page 5**

This is an internal report of student credit hours generate by year and term as of January 2013.

**Non-credit Workforce Training: Page 6**

This is an internal report of non-credit workforce training for both the number of participants and the number of student contact hours by year.

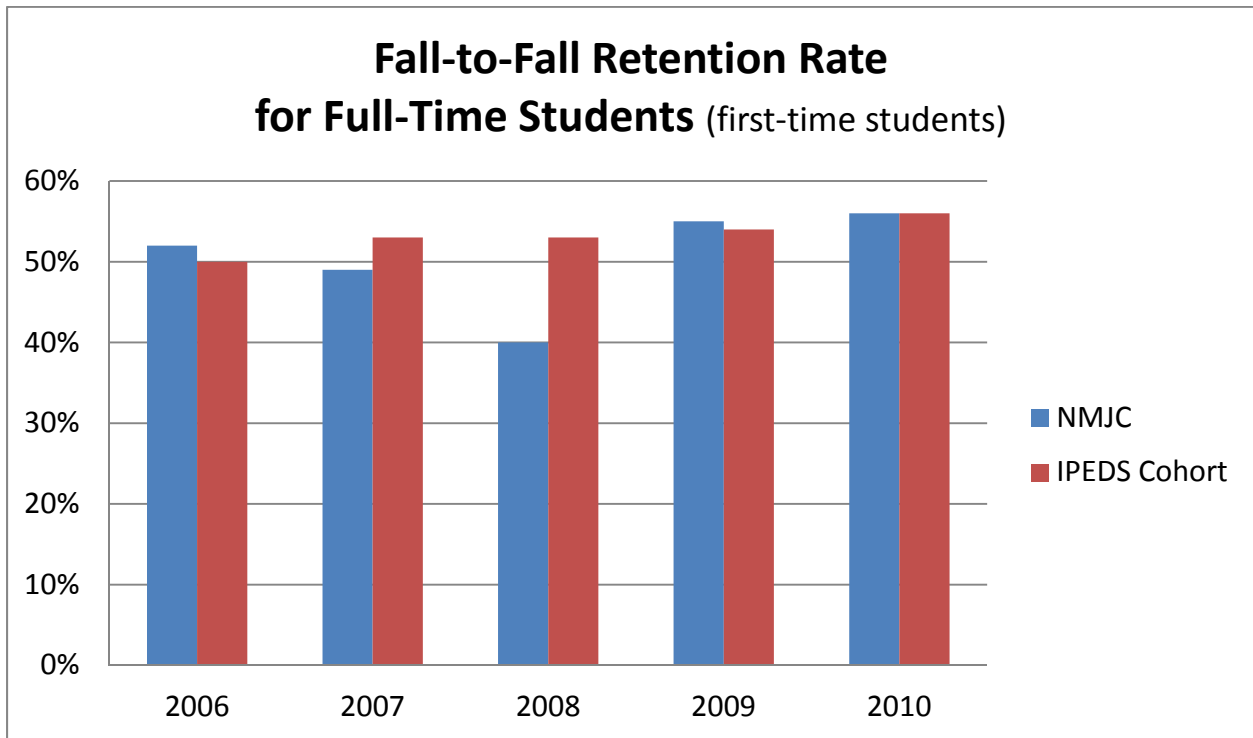
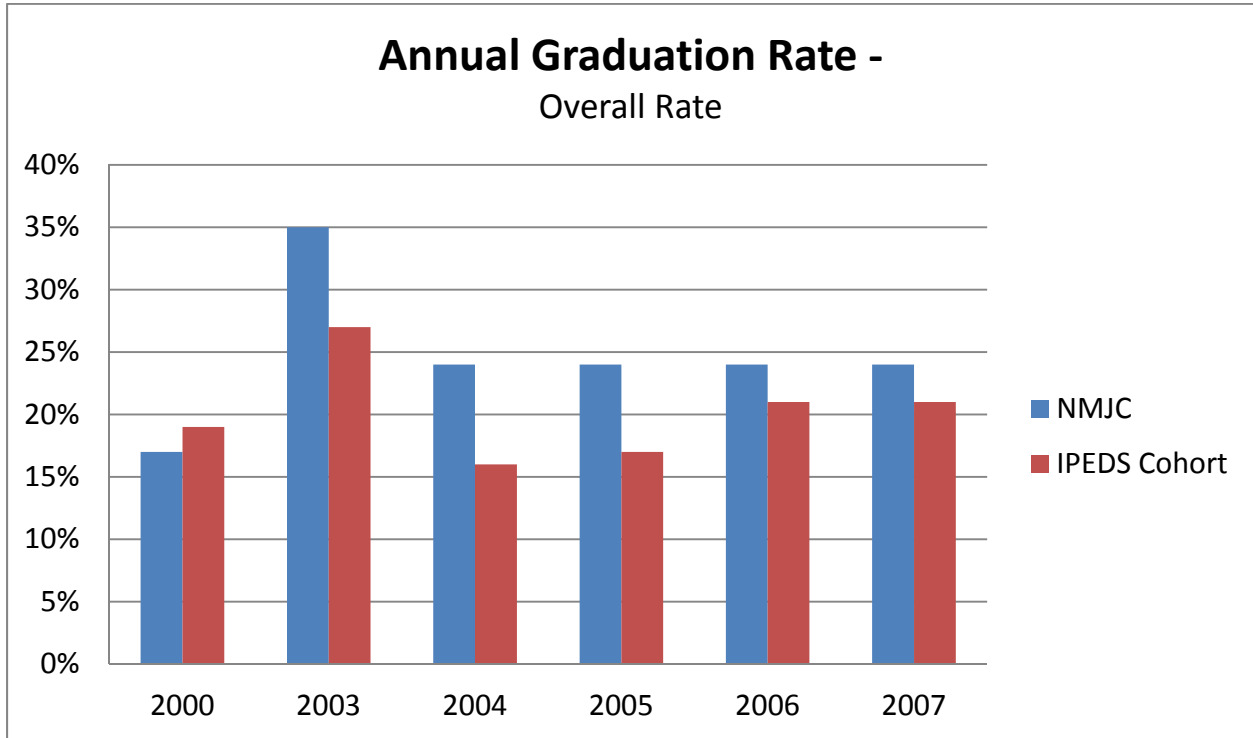
**External Funding Page 7**

This is an internal report of external funding received from government and private grants as well as endowment fund balances for the NMJC Foundation.

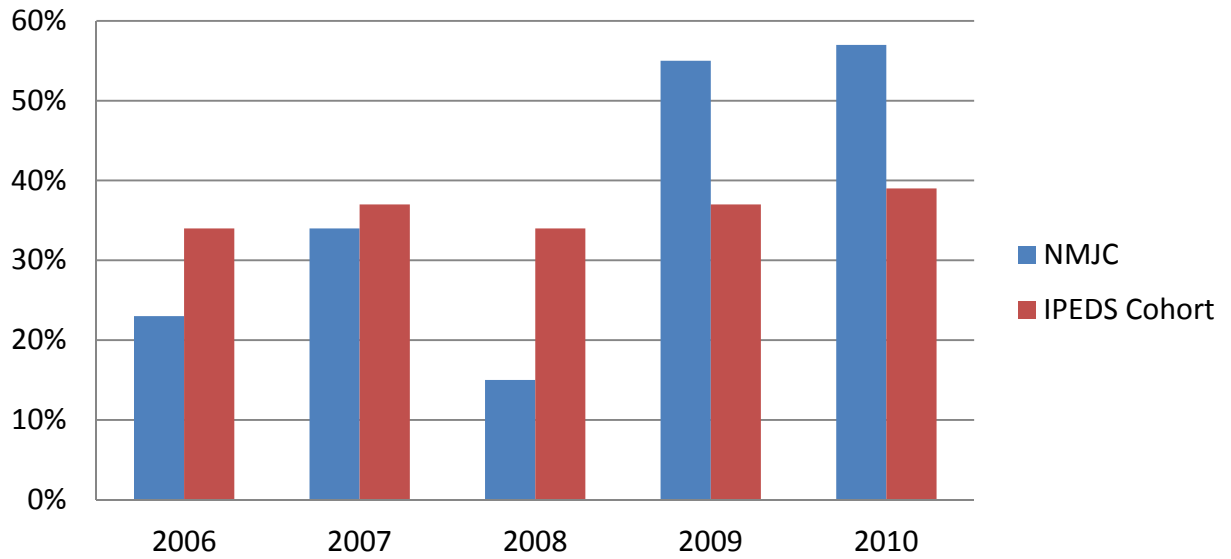
**PBIs Page 8**

There are 10 performance-based indicators (PBI) reported to the New Mexico Higher Education Department (NMHED) through the New Mexico Independent Community College Association (NMICC). The numbers presented in this report represent NMJC’s reported indicators. When compiled by NMICC into their annual report, the indicators offer a comparison of NMJC to other schools within the state. Each PBI has its own methodology for calculating percentages and other information.

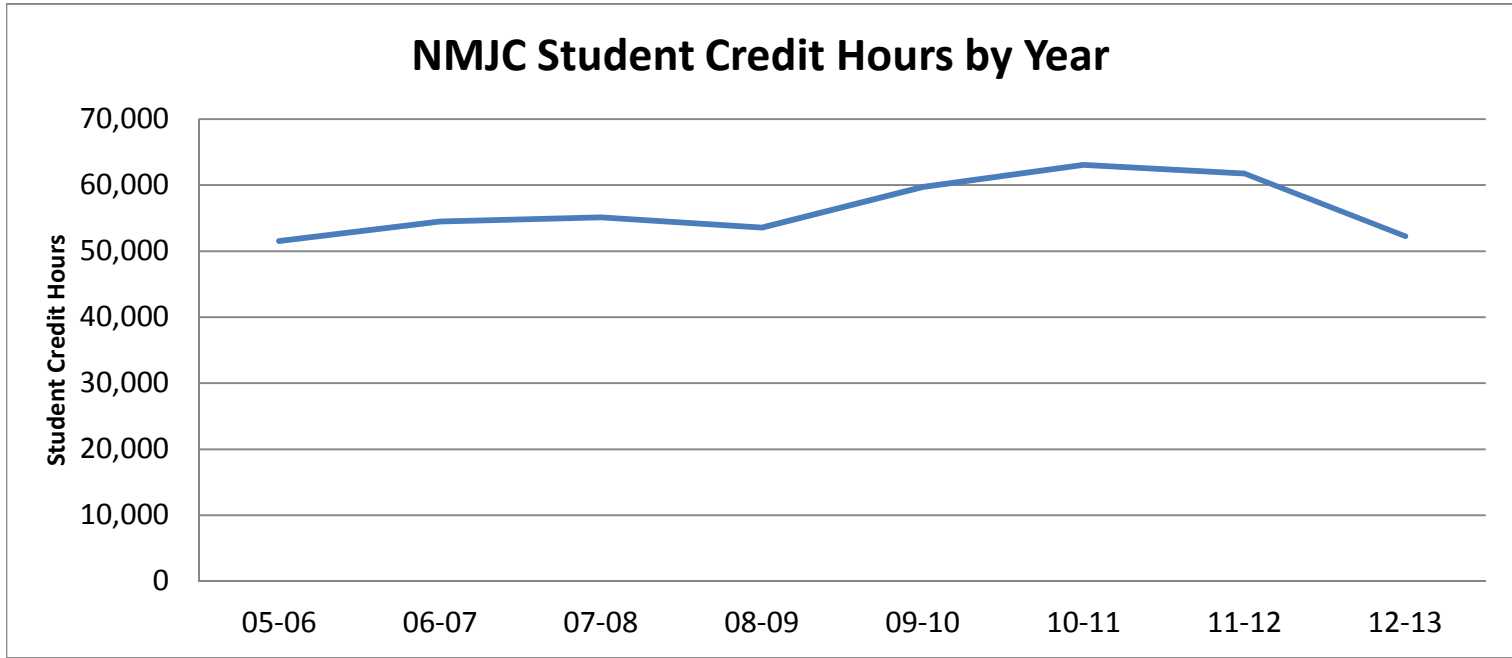
Comparison of NMJC Performance to IPEDS Identified Cohort  
 Source: Integrated Post-Secondary Reporting System  
 U.S. Department of Education



### Fall-to-Fall Retention Rate for Part-Time Students (first-time students)

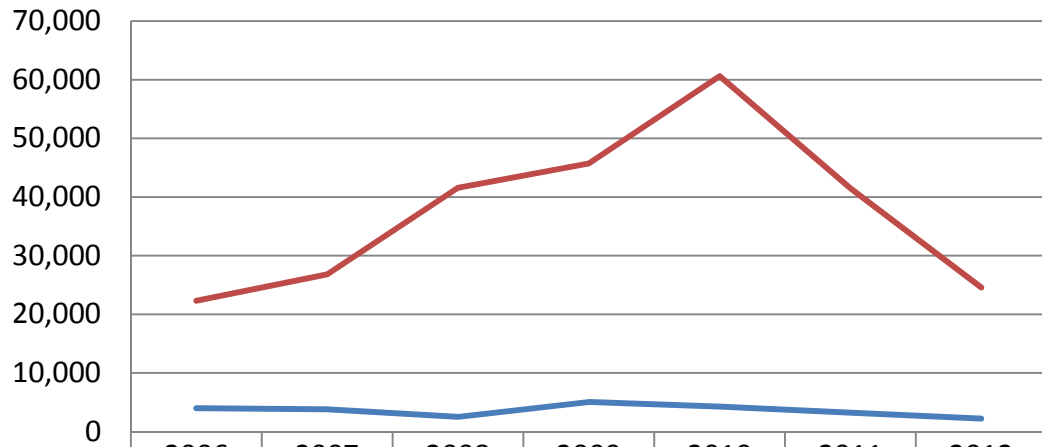


### NMJC Student Credit Hours by Year



	05-06	06-07	07-08	08-09	09-10	10-11	11-12	12-13
Summer	5,663	5,099	6,166	5,124	7,200	7,265	6,766	6,005
Fall	23,955	25,837	26,009	24,027	28,205	28,858	29,494	24,406
Spring	21,919	23,540	22,941	24,390	24,325	26,947	25,499	21,862
	<b>51,537</b>	<b>54,476</b>	<b>55,116</b>	<b>53,541</b>	<b>59,730</b>	<b>63,070</b>	<b>61,759</b>	<b>52,273</b>

### NMJC Non-credit Workforce Training Participants and Contact Hours



	2006	2007	2008	2009	2010	2011	2012
Participants	3,983	3,800	2,510	5,049	4,251	3,221	2,216
Contact Hours	22,319	26,821	41,563	45,721	60,610	41,490	24,572

Note: External funding support for workforce training is calculated based on annual contact hours.

External funding for workforce training:

	FY10	FY11	FY12	FY13
Funds Received	\$78,739	\$98,581	\$63,540	\$24,500
Rank in State	#2	#2	#2	#4

# NMJC Funding

## Report of External and Foundation Funding

As of June 30, 2010

	June 2009	June 2010	June 2011	June 2012
NMJC Foundation				
Total Assets	\$4,188,977	\$4,668,321	\$5,512,239	\$5,497,215
Total Donations Received	\$293,503	\$209,875	\$163,194	\$141,641
External Funding Received				
Government Grants	\$1,511,983	\$1,565,915	\$1,509,286	\$1,084,325
Private Foundations	\$487,322	\$165,458	\$535,483	\$535,093

**New Mexico Community Colleges**  
**Community College Performance-Based Indicators**  
**Reporting Date: September 2012**

**College:** New Mexico Junior College  
**Prepared by:** Larry Sanderson  
**Date:** October 15, 2012

#	Performance Measures	FY 10 Actual	FY 11 Actual	FY 12 Actual	FY 13 Budget	FY 14 Target
1	Percent successful after 3 years	61.7%	67.6%	68.8%	62.0%	65.0%
10	Percent complete within 150% of time	18.2%	18.4%	14.9%	33.0%	33.0%
2	Percent placed in jobs in New Mexico	75.8%	75.4%	67.5%	75.0%	75.0%
3	Percent of Hispanic students enrolled	38.8%	39.3%	40.0%	42.0%	43.0%
4	Percent of Hispanic graduates	42.1%	42.0%	39.1%	45.0%	45.0%
5	Contract training clients (rev. measure) <sup>1</sup>	4,251	3,221	2,216	4,000	4,000
6	Number enrolled in distance education	18,848	21,951	21,085	20,000	22,500
7	Percent of programs with stable or increasing enrollment	65.0%	81.3%	92.3%	83.0%	83.0%
8	Percent persisting to following spring	62.0%	70.8%	76.8%	75.0%	75.0%
9	Percent placed in jobs or continuing education in New Mexico	85.7%	85.2%	80.2%	85.0%	85.0%

\* Vocational School Measure changed to Contract Training (see note in PBB1 5).