

# NMJC Enrollment Report

## 2005-2010

February 26, 2010



# NMJC Student Enrollment Report 2005-2010

February 2010

<b>One Year Snapshot</b>			
	<b>08/09</b>	<b>09/10</b>	Change
Fall Headcount			
Fulltime	1,068	1,233	15.4%
Parttime	1,952	2,045	4.8%
<b>Total</b>	<b>3,020</b>	<b>3,278</b>	<b>8.5%</b>
Student Credit hours	53,419	60,825	13.9%
Workforce Students	2,510	5,049	101.2%

## Credit-bearing Enrollment

Student Credit Hours - Chart 1

	<b>05/06</b>	<b>06/07</b>	<b>07/08</b>	<b>08/09</b>	<b>09/10</b>
Summer		5,090	6,166	5,619	6,146
Fall	25,249	25,824	26,009	24,050	28,192
Spring	21,888	23,526	22,941	23,750	26,487
<b>Total</b>		<b>54,440</b>	<b>55,116</b>	<b>53,419</b>	<b>60,825</b>
4 Yr Total Change					11.7%

Fall Headcount - Chart 2

	<b>Fall 05</b>	<b>Fall 06</b>	<b>Fall 07</b>	<b>Fall 08</b>	<b>Fall 09</b>
Fulltime	1,128	1,127	1,143	1,068	1,233
Parttime	1,382	1,529	1,858	1,952	2,045
<b>Total</b>	<b>2,510</b>	<b>2,656</b>	<b>3,001</b>	<b>3,020</b>	<b>3,278</b>
FTE	1,683	1,721	1,733	1,601	1,770
5 Yr FT Change					9.3%
5 Yr PT Change					48.0%
5 Yr Total Change					30.6%

## Workforce and Professional Education Enrollment

Enrollment - Chart 3

	<b>05/06</b>	<b>06/07</b>	<b>07/08</b>	<b>08/09</b>
Students	3,983	3,800	2,510	5,049
Contact Hours	22,319	26,821	41,563	45,721
Co. Served			153	156

## Student Demographics

### Student Age - Chart 4

	<b>Fall 05</b>	<b>Fall 06</b>	<b>Fall 07</b>	<b>Fall 08</b>	<b>Fall 09</b>	<b>5 Yr +/-</b>
Overall Ave.	33.2	32.7	31.7	31.2	29.4	-3.8
Median Age	28	26	25	24	22	-6
FT Students	26.8	25.8	26	23.9	22.9	-3.9
PT Students	36.9	36.4	35.2	35.2	32.8	-4.1
Female	34.9	37	32.6	32.3	30.8	-4.1
Male	31	31.1	30.4	29.6	27.3	-3.7

### Student Gender - Chart 5

	<b>Fall 05</b>	<b>Fall 06</b>	<b>Fall 07</b>	<b>Fall 08</b>	<b>Fall 09</b>
% Female	61.3%	62.3%	58.7%	59.3%	59.5%
% Male	38.7%	37.7%	41.3%	40.7%	40.5%

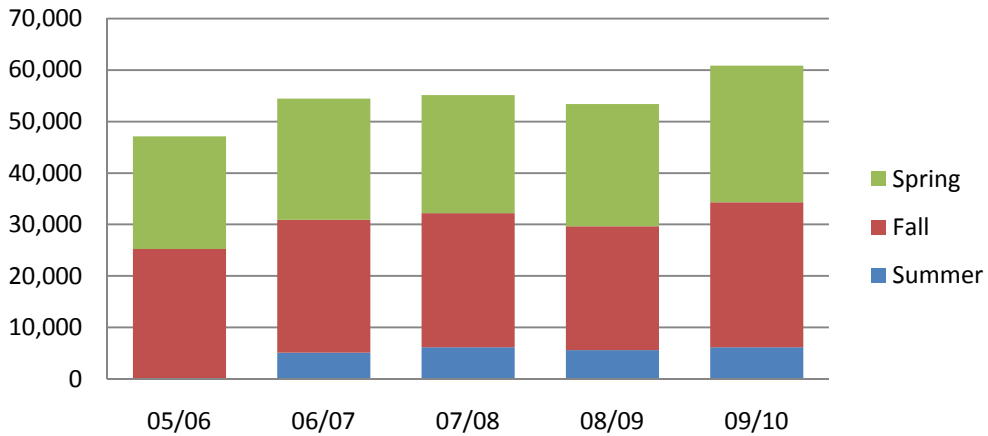
### Student Ethnicity

	<b>Fall 05</b>	<b>Fall 06</b>	<b>Fall 07</b>	<b>Fall 08</b>	<b>Fall 09</b>
Am. Indian	0.9%	0.7%	0.6%	1.0%	0.7%
Asian	0.8%	0.7%	0.5%	1.2%	1.0%
Black/Af. Am.	4.0%	3.4%	4.5%	5.7%	5.5%
Hispanic	37.2%	40.1%	39.1%	39.3%	37.2%
White	53.2%	50.9%	50.3%	48.3%	48.4%
Other/NR	3.9%	4.1%	5.1%	4.5%	7.1%

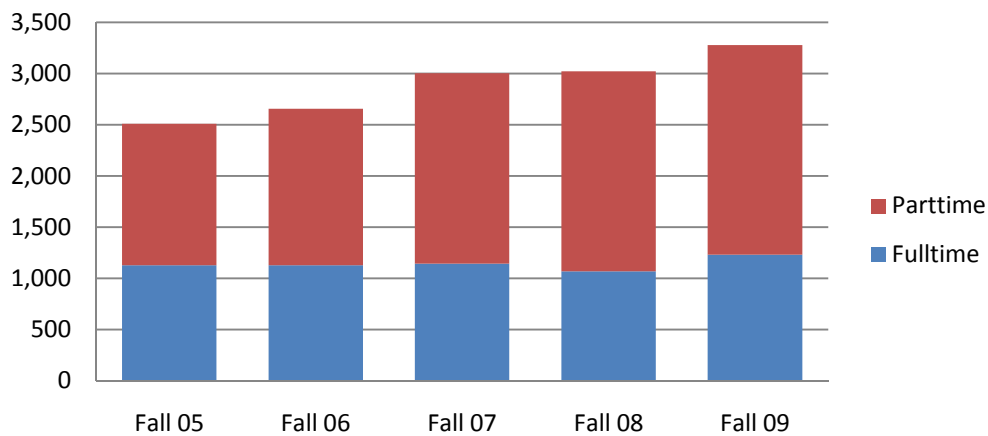
### Student Type

	<b>Fall 05</b>	<b>Fall 06</b>	<b>Fall 07</b>	<b>Fall 08</b>	<b>Fall 09</b>
ACT Academy	5.8%	7.4%	5.0%	5.6%	0.0%
Concurrent HS	1.0%	0.7%	1.4%	1.4%	1.6%
Continuing	44.8%	43.3%	47.3%	46.6%	40.8%
Dual HS	9.9%	8.3%	9.6%	9.6%	19.3%
1st Time Fresh.	16.1%	16.2%	15.3%	16.1%	17.1%
Readmitted	16.2%	12.0%	7.7%	8.3%	7.7%
Transfer	2.3%	3.4%	8.6%	3.7%	4.2%
Other	4.0%	8.7%	5.2%	8.6%	9.2%

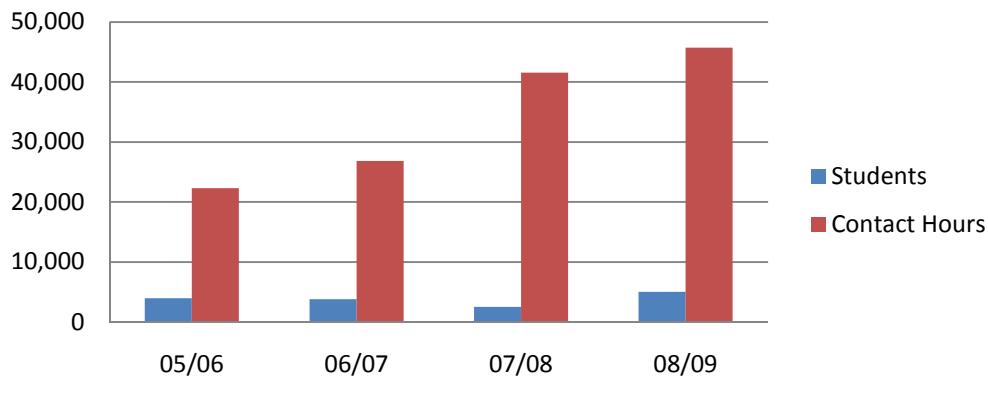
### Chart 1: Annual Student Credit Hours



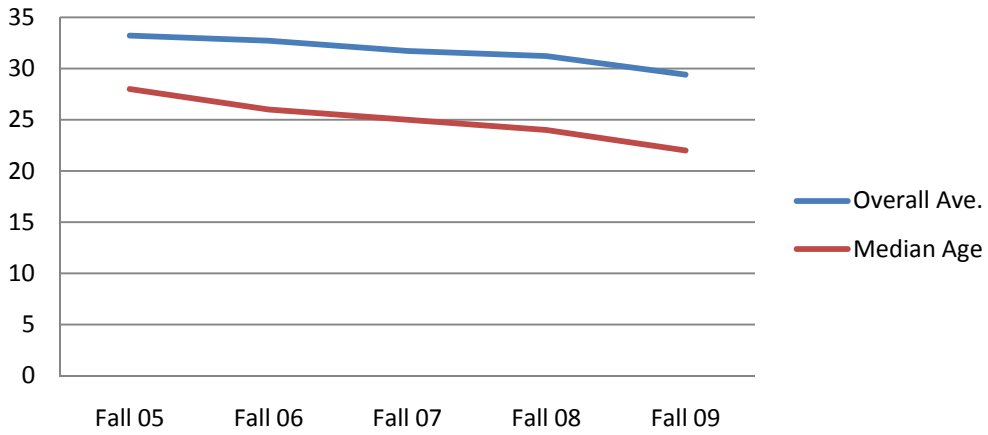
### Chart 2: Fall Headcount



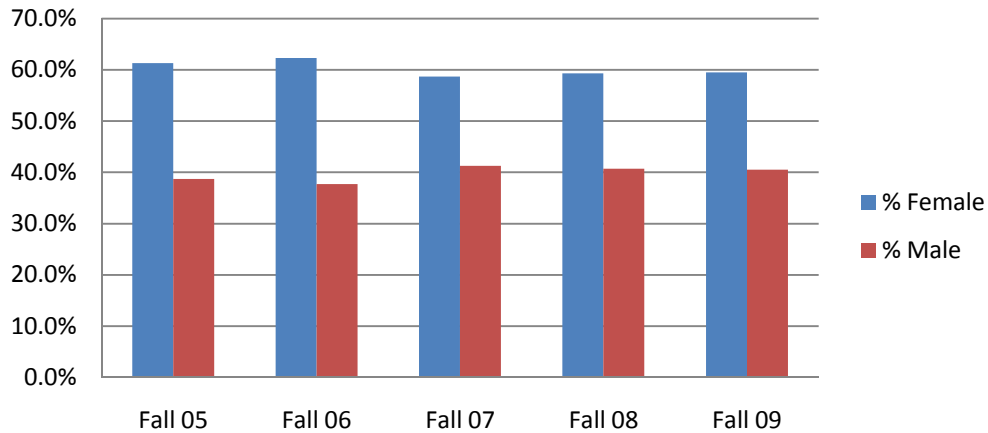
### Chart 3: Workforce Students and Contact Hours



### Chart 4: Student Age



### Chart 5: Student Gender



# Analysis of Alternative Delivery Methods by Division

29-Sep-09

	Fall 07	Fall 08	Fall 09	2yr +/-
Total Sections	678	657	695	
Total SCH	26000	24027	26903	12.0%
Web Sections	90	124	144	
Web SCH	4380	5133	7086	38.0%
Web % of Total SCH	16.8%	21.4%	26.3%	
iTV Sections	42	54	61	
iTV SCH	1224	1447	1572	8.6%
iTV % of Total SCH	4.7%	6.0%	5.8%	

% SCH Non-trad.	21.6%	27.4%	32.2%
-----------------	-------	-------	-------

Non-Dist Sections	546	479	490	
Non-Dist SCH	20396	17447	18245	4.6%

<b>Arts and Humanities</b>	Fall 08	Fall 09	2yr +/-
Total SCH	6363	6842	7.5%
HS SCH	482	739	53.3%
Web SCH	1807	2003	10.8%
Trad Delivery (Core)	4074	4100	0.6%
AH % of Total	17.0%	15.2%	-1.7%

<b>Math and Science</b>	Fall 08	Fall 09	2yr +/-
Total SCH	9522	11800	23.9%
HS SCH	1274	1945	52.7%
Web SCH	2185	3087	41.3%
Trad Delivery (Core)	6063	6768	11.6%
MS % of Total	25.2%	25.2%	0%

<b>Career and Technology</b>	Fall 08	Fall 09	2yr +/-
Total SCH	6318	7089	12.2%
HS SCH	1309	1756	34.1%
Web SCH	777	1281	64.9%
Trad Delivery (Core)	4232	4052	-4.3%
CT % of Total	17.6%	15.1%	-2.6%

% High School	12.8%	16.5%
---------------	-------	-------

% WO and High School	34.1%	42.8%
----------------------	-------	-------

<b>Evening Classes</b>	Fall 08	Fall 09	2yr +/-
SCH	2226	2559	15.0%
Sections	102	107	
% of Total SCH	9.3%	9.5%	